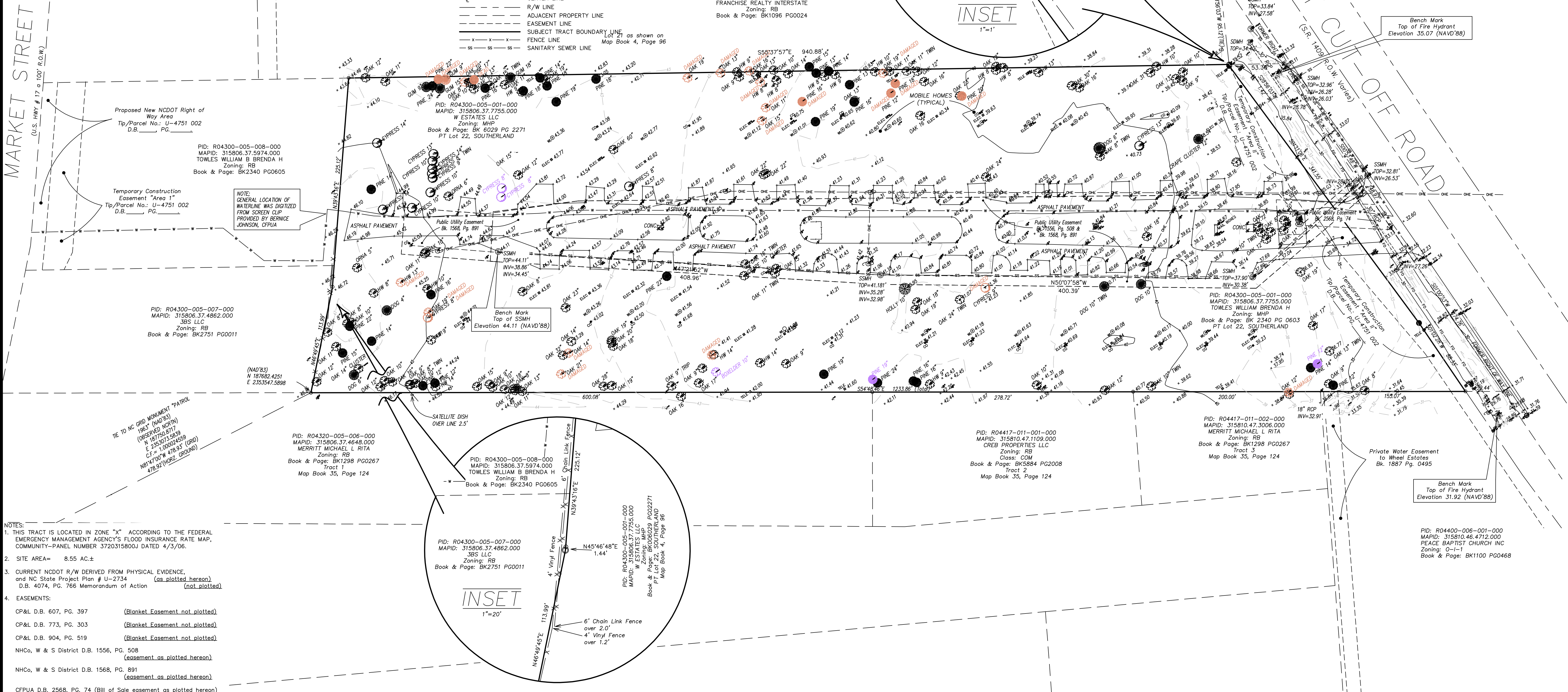


- LEGEND**
- EXISTING IRON
 - SET IRON
 - CONC. MONUMENT
 - ROW DISC MARKER
 - FIRE HYDRANT
 - SANITARY SEWER MANHOLE
 - STORM DRAINAGE MANHOLE
 - WATER METER
 - SANITARY SEWER CLEANOUT
 - WELL
 - WATER VALVE
 - WATER HOOKUP
 - LP GAS METER
 - ELECTRIC PEDESTAL
 - TELEPHONE PEDESTAL
 - LIGHT POLE
 - POWER POLE
 - DAMAGED TREE
 - TREE UPDATES
 - R/W LINE
 - ADJACENT PROPERTY LINE
 - EASEMENT LINE
 - SUBJECT TRACT BOUNDARY LINE
 - FENCE LINE
 - SANITARY SEWER LINE
 - WATER LINE
 - OVERHEAD ELECTRIC LINE
 - FIBER OPTIC CABLE
 - CENTER LINE



To Tribute Investment and Development, Inc. and Yadin Bank d/b/a NewBridge Bank

I CERTIFY THAT THIS MAP DRAWN UNDER MY SUPERVISION FROM AN ACTUAL SURVEY MADE UNDER MY SUPERVISION FROM AN ACTUAL SURVEY MADE UNDER MY SUPERVISION THAT THE BOUNDARIES NOT SURVEYED ARE INDICATED AS DRAWN FROM INFORMATION SHOWN HEREON; THAT THE RATIO OF PRECISION IS 1:10,000+; AND THAT THIS MAP MEETS THE REQUIREMENTS OF THE STANDARDS OF PRACTICE FOR LAND SURVEYING IN NORTH CAROLINA (21 NCAC 56.1600), THIS 17th DAY OF May, 2019.

ARNOLD W. CARSON, PLS - 3267



- NOTES:**
- THIS TRACT IS LOCATED IN ZONE "X" ACCORDING TO THE FEDERAL EMERGENCY MANAGEMENT AGENCY'S FLOOD INSURANCE RATE MAP, COMMUNITY-PANEL NUMBER 3720315800J DATED 4/3/06.
 - SITE AREA= 8.55 AC.±
 - CURRENT NCDOT R/W DERIVED FROM PHYSICAL EVIDENCE, and NC State Project Plan # U-2734 (as plotted hereon) D.B. 4074, PG. 766 Memorandum of Action (not plotted)
 - EASEMENTS:
 - CP&L D.B. 607, PG. 397 (Blanket Easement not plotted)
 - CP&L D.B. 773, PG. 303 (Blanket Easement not plotted)
 - CP&L D.B. 904, PG. 519 (Blanket Easement not plotted)
 - NHCo, W & S District D.B. 1556, PG. 508 (easement as plotted hereon)
 - NHCo, W & S District D.B. 1568, PG. 891 (easement as plotted hereon)
 - CFPUA D.B. 2568, PG. 74 (Bill of Sale easement as plotted hereon)
 - COW D.B. 2914, PG. 1115 (Utility Easement off site-not plotted)
 - S T GROUP LLC D.B. 2444, PG. 474 (15' PRIVATE UTILITY EASEMENT) (2444/0474 released by 3654/0864 removed from map)
 - WHEEL ESTATES D.B. 1887, PG. 495 (PRIVATE 15' U.E.) (off site easement as plotted)

NO.	DESCRIPTION	DATE
1	LOCATED HURRICANE DAMAGED TREES AND OTHER TREE UPDATES	5/17/19



Bateman Civil Survey Company
 Engineers Surveyors Planners
 200 N. Main Street, Holly Springs, NC 27540
 Phone: 919.577.1080 Fax: 919.577.1081
 NCBELS FIRM No. C-2378

TOPOGRAPHICAL SURVEY
 OF
WHEEL ESTATES

AS RECORDED IN DEED BOOK 6029, PAGE 2271 OF THE NEW HANOVER COUNTY REGISTRY
 WILMINGTON, WILMINGTON TOWNSHIP, NEW HANOVER COUNTY, NORTH CAROLINA
 SCALE: 1" = 50'

TRIBUTE CONSTRUCTION
 10 South Cardinal Drive
 Wilmington, NC 28403

Field By: CFC/DO
 Drawn By: AWC/SSD
 Checked By: AWC
 Scale: 1" = 50'
 Project Number: 16W094
S-1